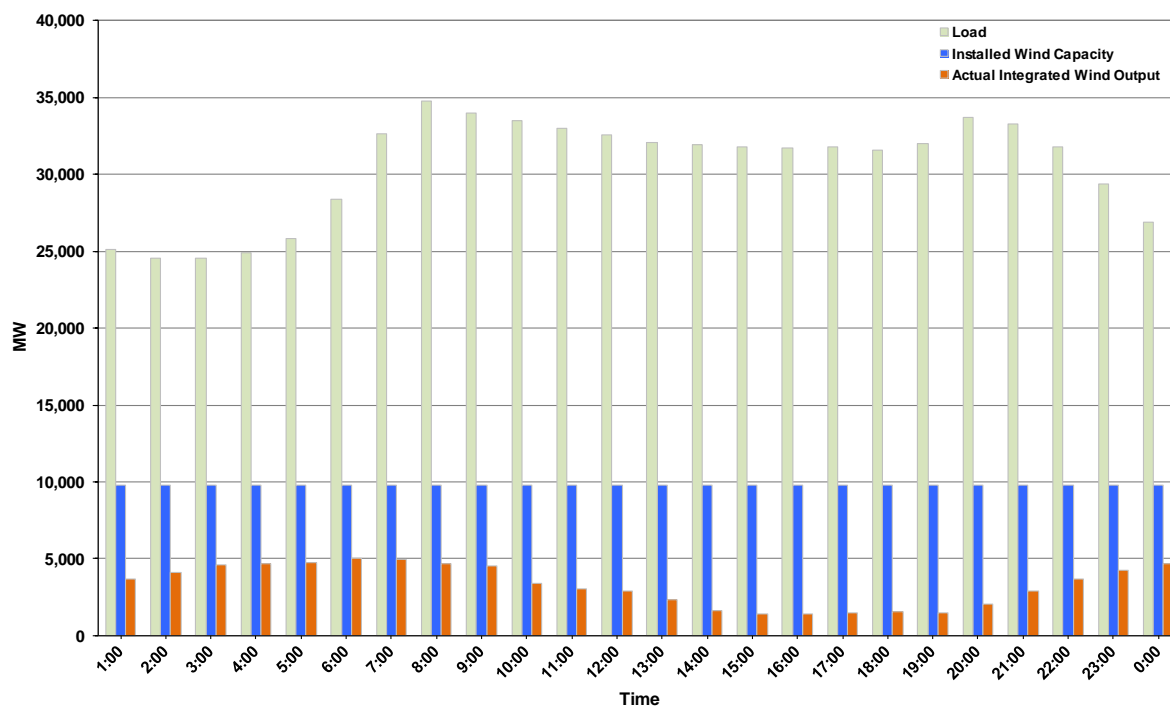




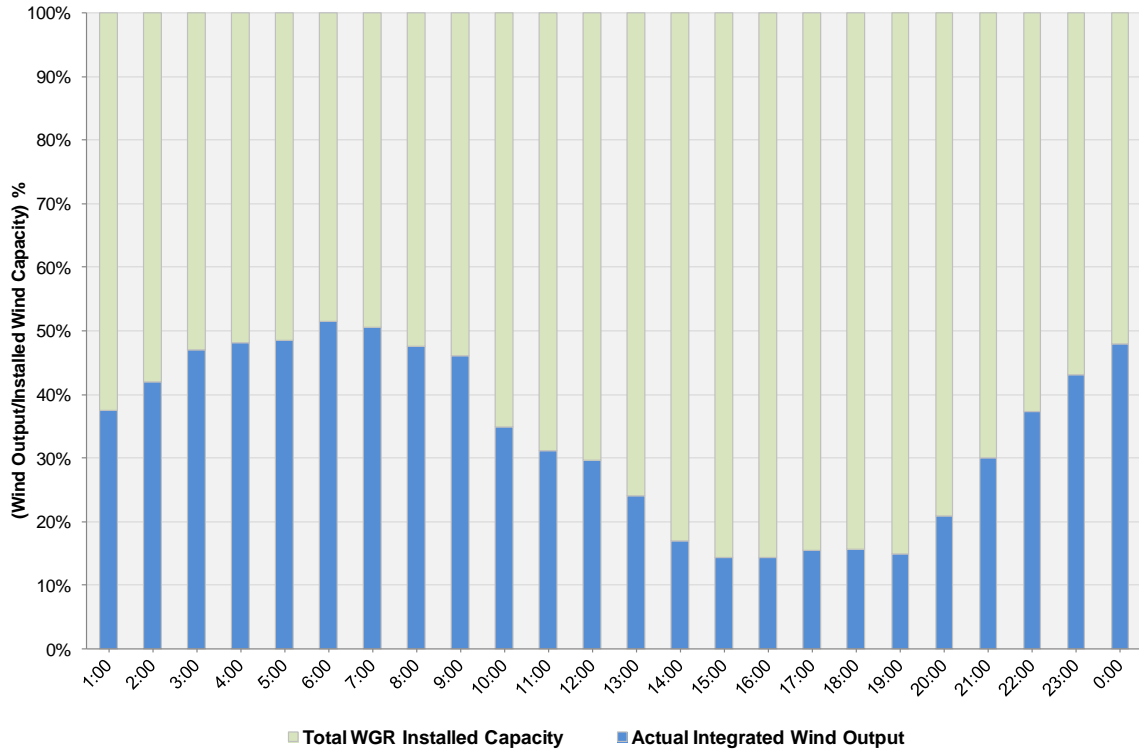
ERCOT Grid Operations Wind Integration Report: 10/29/2012

Peak Load	34,782 MW
Load Peak Hour (HE)	8
Wind over Peak	4,653 MW
Wind Record 06/19/12	8,368 MW
Max Wind Value	5,118 MW
Wind Peak Time	06:26
Wind Integration %	15.77%

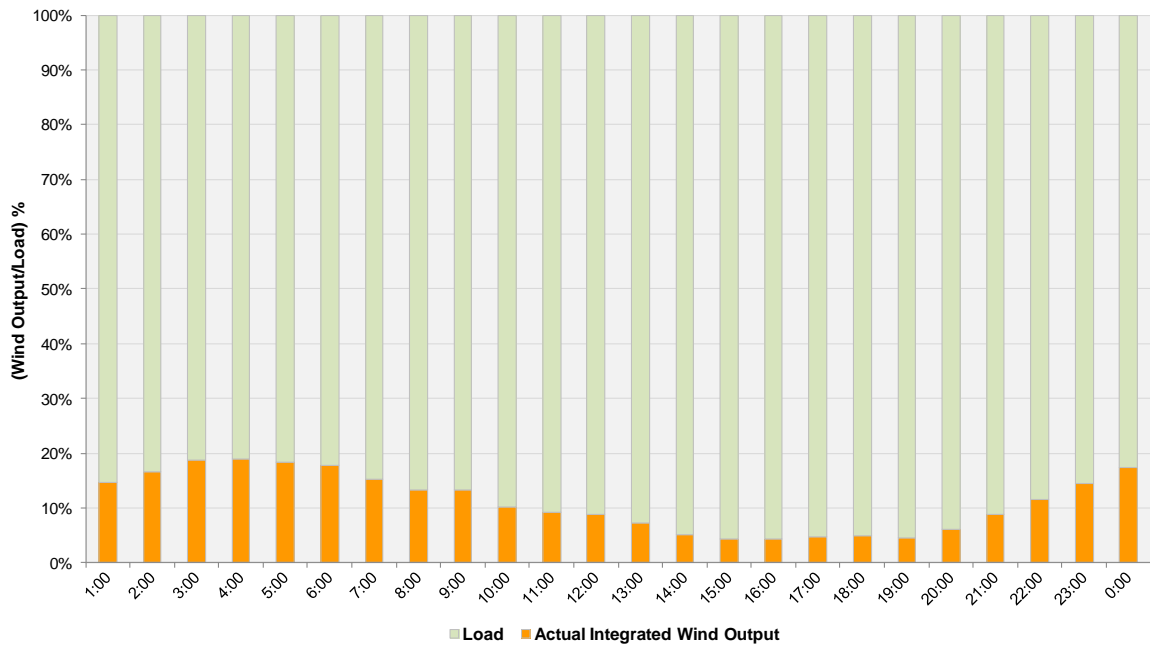
**Hourly Average Actual Load vs. Actual Wind Output
10-29-2012**



Actual Wind Output as a Percentage of the Total Installed Wind Capacity
10-29-2012



Actual Wind Output as a Percentage of the ERCOT Load
10-29-2012



ERCOT Load vs. Actual Wind Output 10/22/2012 - 10/29/2012

